

CHAMPION ENCLOSURES



One of Champion Controls, Inc.'s latest endeavors is the launching of an enclosure division that will focus solely on the design and manufacture of custom stainless steel and aluminum industrial enclosures each constructed to safely and

reliably protect critical electrical controls and electrical systems in industrial, data communications, commercial construction and government applications. Champion Enclosures will staff experts to help you engineer the most

cost-effective solutions and cater to virtually any enclosure need. At our first-class UL-listed facility in Ft. Lauderdale, Florida, Champion Enclosures will be able to customize our products to meet our customer's specific needs.

Cont. Pg. 3

VOLUME 1, ISSUE 2

In this issue:

Champion Enclosures	1,3
Broadview Project Profile	1,4
Employee Spotlight	2
In The News	2
Champion Charity Day	3

JUNE 1, 2009

Special points of interest:

- * Champion Enclosures
- * Upcoming Champion Charity Day
- * Birthday Shout Outs

A NICE VIEW FROM BROADVIEW

In the fall of 1993, the Broward County Board of County Commissioners authorized the establishment of The Neighborhood Improvement Program, an unprecedented set of public works projects in eight major

communities, representing 25 neighborhoods in mostly unincorporated Broward County. The Neighborhood Improvement Program started as drainage improvement projects designed to alleviate flooding in low-lying areas of the

county. However, other neighborhoods within the county which had been constructed in the 1940s and 1950s were also experiencing inadequate drainage, in addition to being adversely affected by an aging potable water infrastructure and a

Cont. Pg. 4

CHAMPION CONTROLS, INC.

811 N.W. 57th Place
Fort Lauderdale, Fl. 33309
Phone: (954) 318-3090
Fax: (954) 318-3091
corinne@championcontrols.com



Champion Controls, Inc.

We're On The Web!
championcontrols.com
Also Find Us On
Facebook and LinkedIn



The staff at Champion Controls, Inc. is always working hard to put out quality products and ensure customer satisfaction.

EMPLOYEE SPOTLIGHT

Born in Wimbledon, England and a native to Kingston, Jamaica, Senior Engineer Donald Davis serves as a valuable member of the Champion Controls, Inc. team.

Davis studied at the College of Arts, Science, and Technology in Jamaica. After moving to the United States in 1987, Davis spent 16 years working as the lead engineer for general contracting company, Acutec, Inc.

Davis has over 20 years of experience in the industry, with expertise in computer programming, networks and software, including C++, Visual C++, Foxpro, and Visual Basic. Davis is also qualified in SCADA software such as Wincc, Intellusion, MosCad, and Wonderware, as well as other software such as Autocad and Lotus 123. He holds certifications in Campbell Scientific CR-10, Control System Design II, Fiber Optics, Motorola MosCad, Wired and Wireless Network, and C++ Programming.

Davis is happily married with one stepson and says his greatest accomplishment was the day he became a Christian.



IN THE NEWS

EPA Announces More Than \$132 Billion In Stimulus Funds for Wastewater Infrastructure Projects in Florida to Boost Economy, Create Jobs and Protect the Environment

(EPA Release, April 14, 2009) — In a move that stands to create jobs, boost local economies, improve aging water infrastructure and protect human health and the environment for the people in the State of Florida, the U.S. Environmental Protection Agency (EPA) has awarded \$132,286,300 million to the Florida Department of Environmental Protection.

“This award is significant because it marks the first investment of EPA stimulus funds from the American Recovery and Reinvestment Act to Florida,” said Stan Meiburg, EPA Acting Regional Administrator in Atlanta. “With this investment, we are embarking on an unprecedented effort to protect human health and the environment and create green jobs.”

The funds provided by the American Reinvestment and Recovery Act of 2009, will go to the state’s Clean Water State Revolving Fund program. The Clean Water State Revolving Fund program provides low-interest loans for water quality protection projects for wastewater treatment, non-point source

pollution control, and watershed and estuary management.

An unprecedented \$4 billion dollars will be awarded to fund wastewater infrastructure projects across the country under the Recovery Act in the form of low interest loans, principal forgiveness and grants. At least 20 percent of the funds provided under the Recovery Act are to be used for green infrastructure, water and energy efficiency improvements and other environmentally innovative projects.

Since the Clean Water State Revolving Fund program began in 1987, EPA has awarded more than \$26 billion in grants, which states have turned into \$69 billion of financial assistance for water quality projects. The revolving nature of the program ensures water quality projects will be funded for generations to come.

President Obama signed the American Recovery and Reinvestment Act of 2009 on Feb. 17, and has directed that the Recovery Act be implemented with unprecedented transparency and accountability. To that end, the American people can see how every dollar is being invested at Recovery.gov.

((Article Courtesy of itecsinsider.com))

CHAMPION CHARITY DAY

Champion Controls, Inc. is gearing up for its second Champion Charity Day! This *Special Event For St. Jude* will take place Friday, June 26th at 12:00 pm, and will raise funds for St. Jude Children's Research Hospital®, the premier center for the research and treatment of childhood cancer and other deadly diseases. As our company continue to grow, we find it necessary to give back to our communities in any way we can. It is now, during these rough economic times, that Champion Controls finds it *most* important to give back through our charity day events.

The carnival-themed event will include a delicious all-you-can eat barbeque, cotton candy, and snow cones, music, and even a dunk tank!. A small admission fee of \$2.00 will be collected at the door, and all collections will be donated to St. Jude. Champion Controls will also be making its own donation to the charity. St. Jude donates 84 cents of every dollar collected directly to the treatment and research of life-threatening diseases and cancers in children.

According to St. Jude, there is at least one child in Broward County, and almost 400 children in the state of Florida alone who have been or are patients at St. Jude Children's Research Hospital. St. Jude Children's Research Hospital is internationally recognized for its pioneering work in finding cures and saving children with cancer and other catastrophic diseases. St. Jude freely shares its discoveries with scientific and medical communities around the world. No family ever pays for treatments not covered by insurance, and families without insurance are never asked to pay.

Through programs like *Special Events For St. Jude*, the idea of St. Jude founder Danny Thomas to raise money for the hospital through community-based events is able to continue. For more information, please visit www.stjude.org.



For information on how to host your own *Special Event For St. Jude*, call 1-800-457-2444, or visit www.stjude.org/specialevents

QUOTE OF THE DAY:

“Opportunity is missed by most people because it is dressed in overalls and looks like work.”

- Thomas Edison

CHAMPION ENCLOSURES

Our product line will range from simple small cabinets and boxes, to the most complex NEMA-rated control panel enclosures and junction boxes, custom brackets and related accessories.

From the initial design engineering, to our product quality and reliability, Champion Controls, Inc. believes that our personal commitment to quality is the foundation to great customer service. We apply this theory as one of South Florida's leading systems integrators and plan to apply the same to Champion Enclosures. All Champion Enclosure products will be designed and tested in-house at our UL-listed facility to ensure they comply with UL, NEMA, and other international standards.

Champion Enclosures will strive to provide our customers with comprehensive enclosure solutions that exceed their expectations for quality, performance, and service before, during, and after every sale. Ongoing efforts to differentiate ourselves through high levels of service and customer satisfaction will be a key corporate focus. Our goal is to continue expanding Champion Controls, Inc. through endeavors like our enclosure division. We strive to become one of the nation's leading manufacturers of standard and custom designed enclosures.



Happy Birthday

to ALL of our friends CELEBRATING
THEIR BIRTHDAYS IN MAY and JUNE

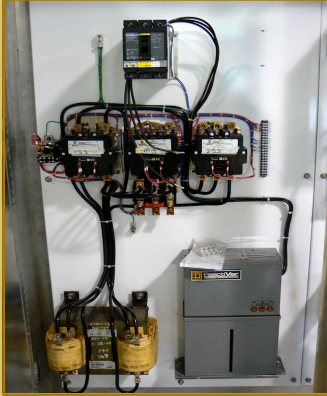
CHU POON, CITY OF MIRAMAR
GILBERT RODOLI, CITY OF MIRAMAR
RENE CASTILLO, JR., RIC-MAN INT.
JOE TEOLIS, CITY OF OAKLAND PARK
RUSSELL CHANG, BROWARD COUNTY



CHAMPION CHRONICLE

VOLUME 1, ISSUE 2

BROADVIEW PROJECT PROFILE



lack of sanitary sewer service. One of these areas includes Broadview Park, a small area just west of Davie Road and US -441, where 6800 residents, 1461 single family homes and 775 multi-family and mobile home units inhabit 700 acres of land. In attempts to improve this area's drainage system, Champion Controls Inc. provided the county with brand new control panels for lift stations 1 and 2, as well as the master lift station triplex panels. Each triplex panel double-door enclosure is made of 316 NEMA 3R stainless steel and stands at an impressive 84 inches. These enclosures house the controls for a three-100

horsepower pump bubbler system, equipped with a Data Flow System controller, 10 KVA transformer, 600 amp main breaker, correction capacitor, 0-10 PSI pressure transducer, transient voltage surge suppressor, and a Diversified SLA 440 ALE Phase Monitor. Along with the master lift station panels, Champion Controls Inc. also provided a manual transformer switch panel and a transformer panel. All of the panels were then incorporated into this comprehensive approach to infrastructure improvements in the rights-of-way of this deserving community.



CHAMPION CHALLENGE TRIVIA

1. What name do we give to a vehicle specifically designed to deliver a high tractive effort at slow speed and used typically in farming and construction?
2. In electrical engineering, what does UPS stand for?
3. Sturmev Archer is best known for what?
4. Angular Contact, Axial and Deep Groove are types of what?
5. What do we call a fusible metal alloy with a melting range of 90 to 450 deg C Celsius which is melted to join metals?
6. Typically found in integrated circuits, what name is given to a semi conductor device which is commonly used to amplify or switch electronic signals?
7. What is 1/64 of an inch, expressed in SI units?
8. In manufacturing/engineering terms, what does BOM stand for?
9. What device converts alternating current to direct current?
10. On what major construction project were Construction Workers Hard Hats first used?

* Answers to this month's trivia will be shown in our next issue!

EDITOR'S NOTE

Thanks for tuning in to the second installment of the Champion Chronicle. I have certainly enjoyed writing it and hope you have and continue to enjoy reading it. This has been an exciting month for us here at Champion. We have had the pleasure of meeting many new faces in the industry, and we have several new projects in the works that we can't wait to share with our readers. If you have suggestions or ideas that you would like to see covered in this newsletter, feel free to e-mail us at Corinne@championcontrols.com. In the meantime, stay tuned!

Look for:



- * SCADA Real-Time Learning Center
- * Champion Charity Day highlights
- * Answers to this month's trivia



In Our Next Issue!